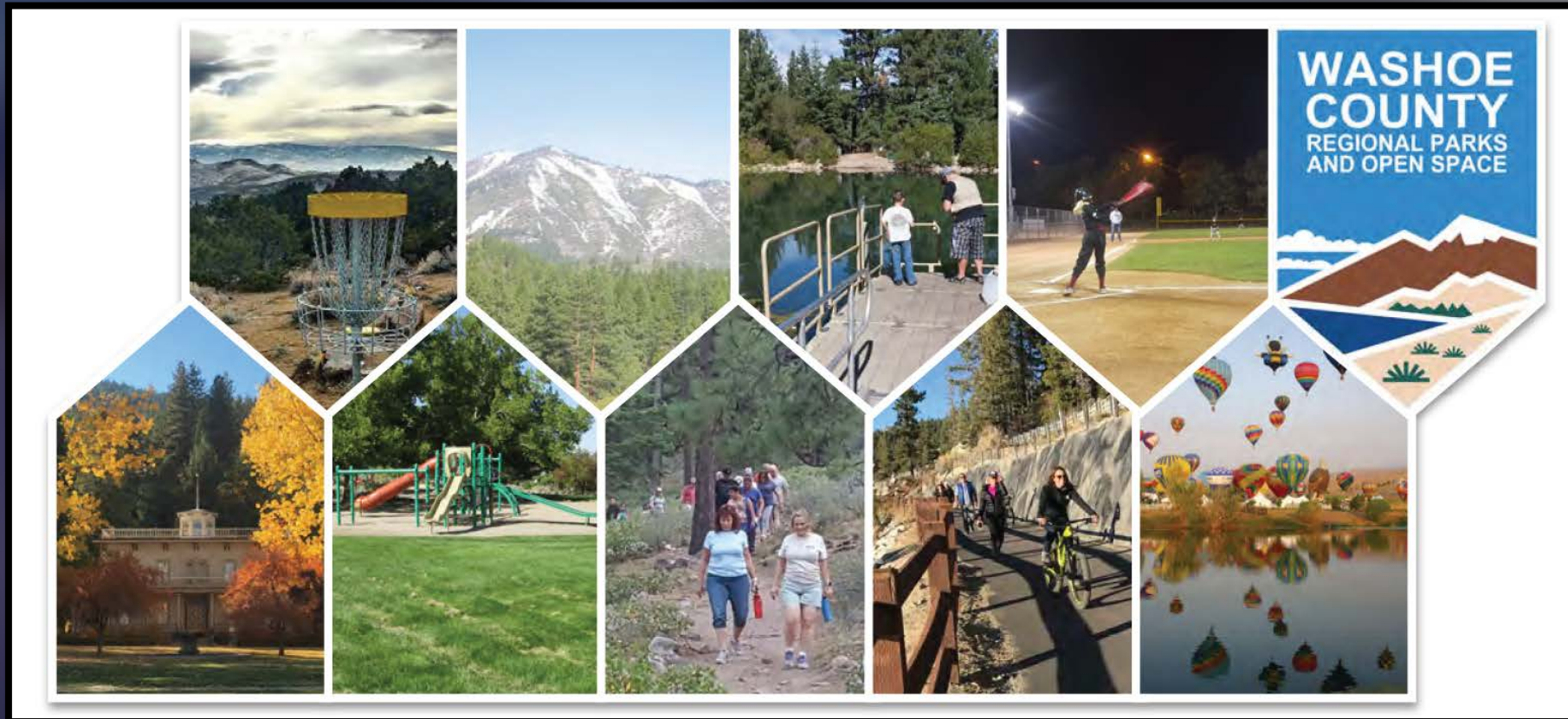




2019 Washoe County Regional Parks and Open Space Master Plan

Park Commission Workshop



September 25, 2020

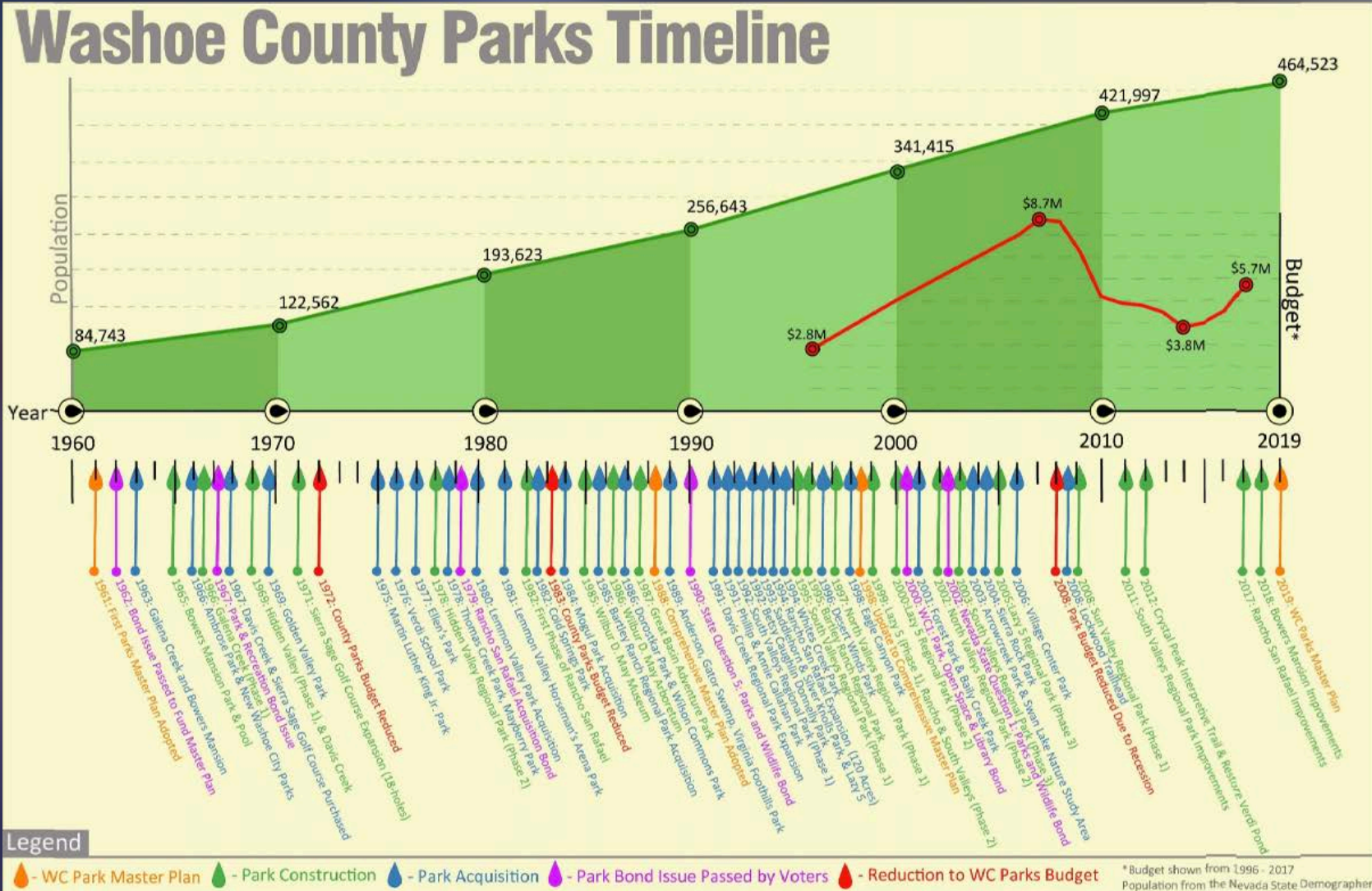


Overview

- Adopted in September of 2019
- Guidance and direction over the next 10-20 years
- Topics:
 - History of the Parks Program
 - Current budget and facilities
 - Surveys and development of the Plan
 - Overarching goals and strategies
 - Planning areas and their gaps and opportunities
 - Plan implementation



History of the Parks Program





Current Budget and Facilities

- 4.9+ million visitors a year
- 40 full-time staff
- 2008 recession – Parks' budget cut by half
- Today – Parks' budget 65% of what it was pre-recession
- Facilities
 - 39 community parks
 - 10 regional parks
 - Over 9,000 acres of open space



Public Input Process

- Two stakeholder meetings in 2018
- Online survey

Washoe County Parks Master Plan Workshops

Spanish Springs/Sparks

April 9th 2018

Spanish Springs Library
7100-A Pyramid Hwy, Sparks NV
6:00-7:00pm

Central

April 10th, 2018

Rancho San Rafael Ranch House
1595 N. Sierra St Reno, NV
6:00-7:00pm

South Valleys

April 11th, 2018

Bartley Ranch WHICH
6000 Bartley Ranch Road, Reno NV
6:00-7:00pm

North Valleys

April 12th, 2018

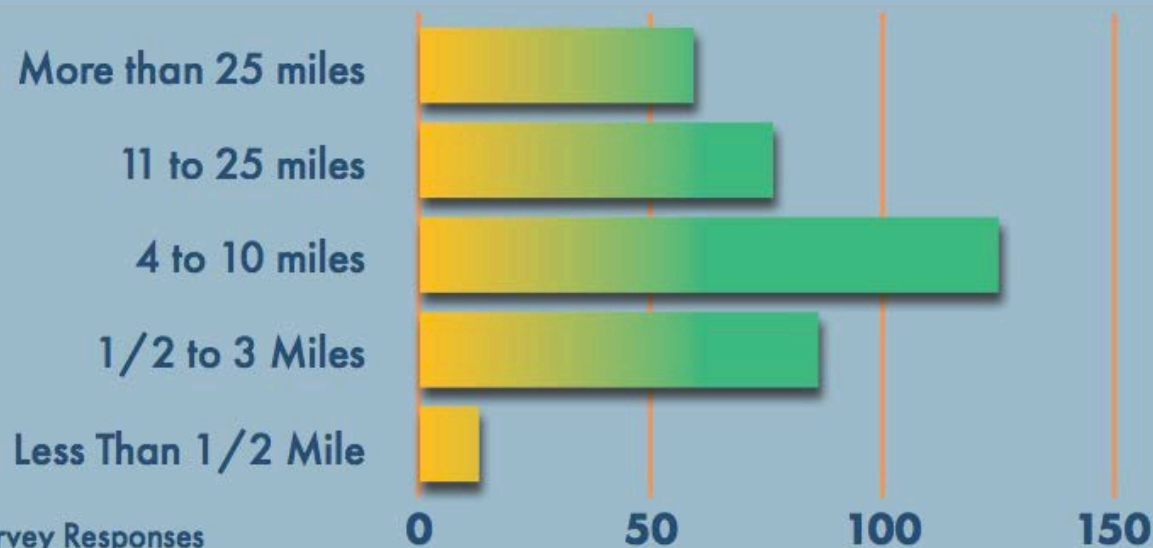
North Valleys Community Center
8085 Silver Lake Road, Reno NV
6:00-7:00pm





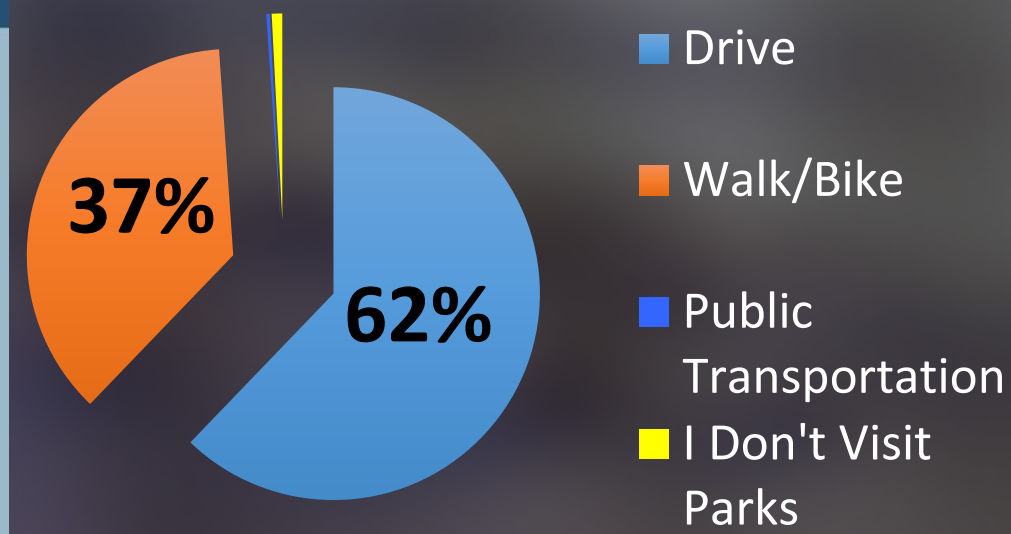
Survey Data

HOW FAR ARE WASHOE COUNTY RESIDENTS WILLING TO TRAVEL FOR THE PARK FACILITIES THAT MOST INTEREST THEM?



*Source: 370 Survey Responses

Preferred Method of Travel to Parks:

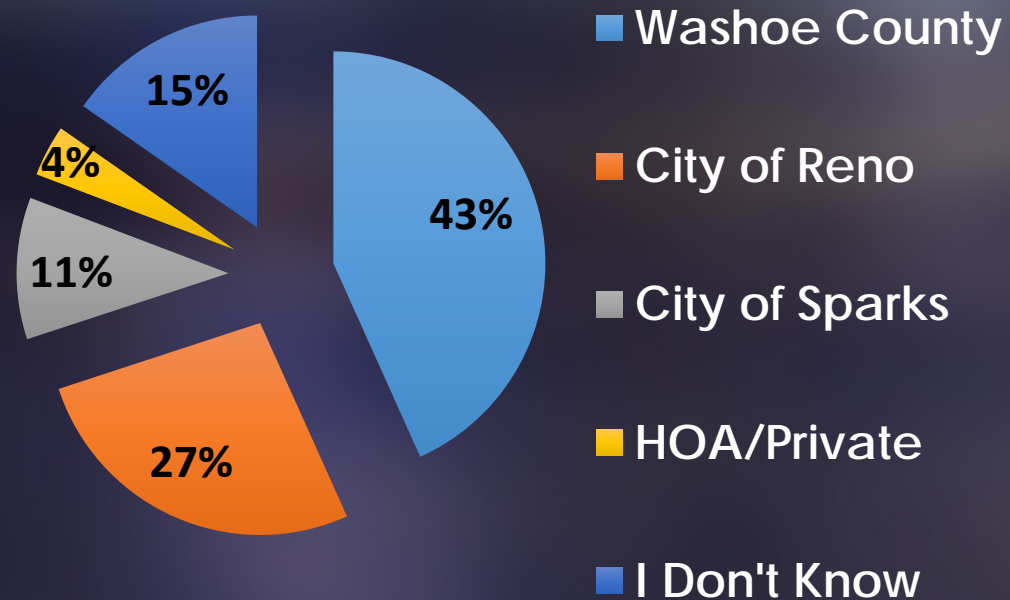


*Over 72% of survey respondents are willing to travel 4+ miles to get to the park facilities that interest them most



Survey Data

Which entity manages the facilities that you use most often?



*Survey respondents use trails and natural areas more than other recreational facilities.

WHICH FACILITIES DO WASHOE COUNTY RESIDENTS USE MOST?



*Source: 113 Public Outreach Meeting Responses; public was asked to choose three top choices



Survey Data

WHERE WOULD WASHOE COUNTY RESIDENTS LIKE TO SEE THE BIGGEST FOCUS OF RESOURCES?





Stakeholder Comments

Park upkeep is as important as having them built.

It is important for everyone to have access to parks.

With an increasing population, we need more sports facilities for kids and more open space available for parks.

Having access to open/natural areas increases the desirability of the county and is a big part of why I love living here.

Some of the trails could use more maintenance, but I know more staff is needed. Hopefully, the County will provide the funding to make that happen.

MORE: Dog Parks Pools Trails
Flat Fields Restrooms Shade Structures



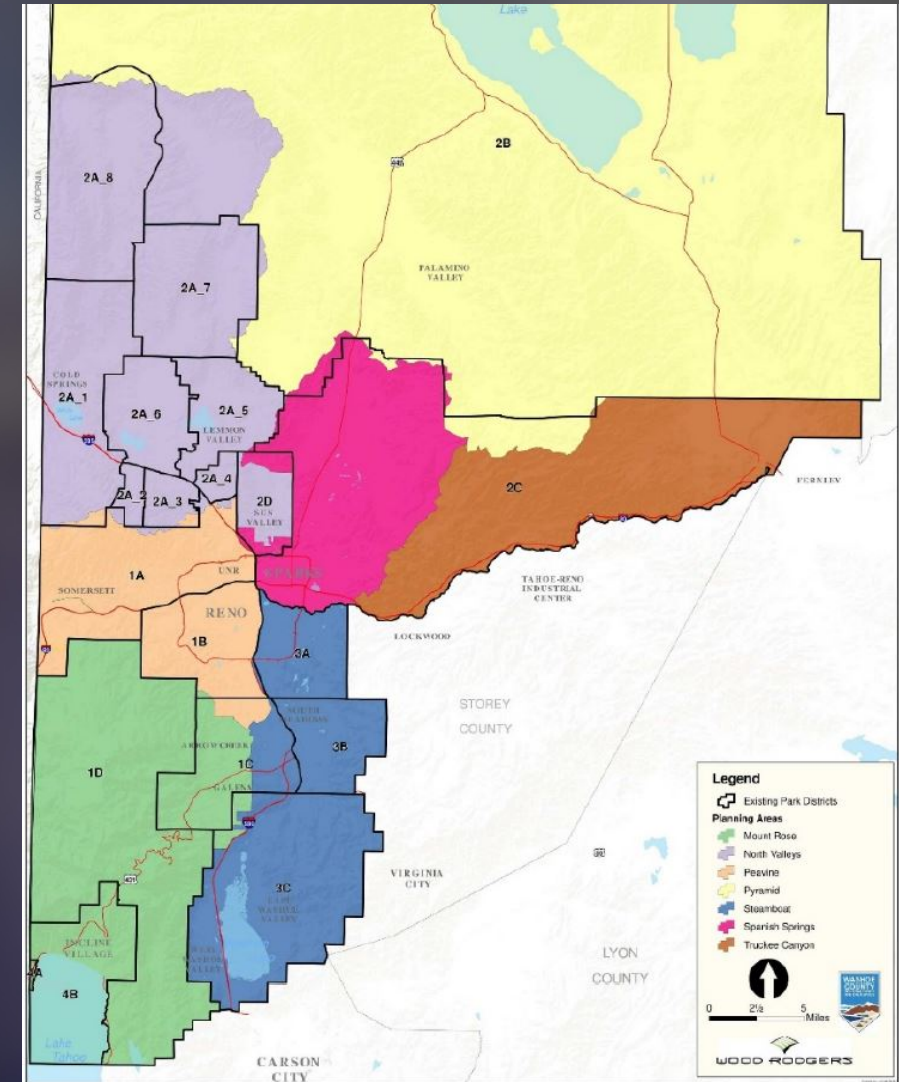
Overarching Goals and Strategies

- Enhance regional recreational opportunities
- Develop and update priorities for each planning area
- Support implementation of each priority
- Maintain and manage existing parks/infrastructure
- Identify sustainable/flexible funding sources
- Protect and enhance natural, cultural and recreational resources
- Contribute to the development of a regional trails system



Existing Planning Areas

- 4 park districts
- 19 sub-districts
- RCT: \$1,000/new dwelling
- Neighborhood park elements only (including maintenance)
- Funds can only be used in the district they were created in





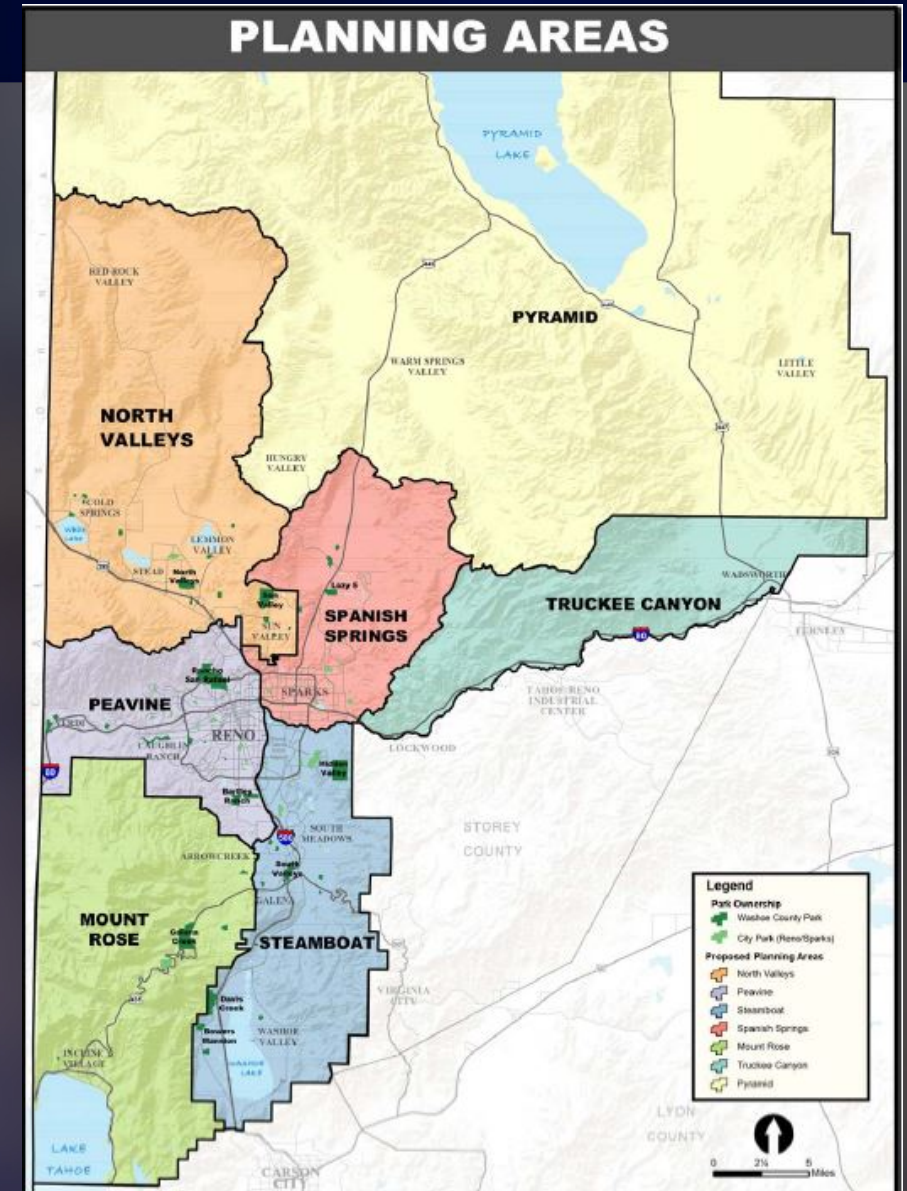
Proposed Planning Areas

Four Urban Planning Areas:

1. North Valleys
2. Spanish Springs
3. Peavine
4. Steamboat

Three Rural Planning Areas:

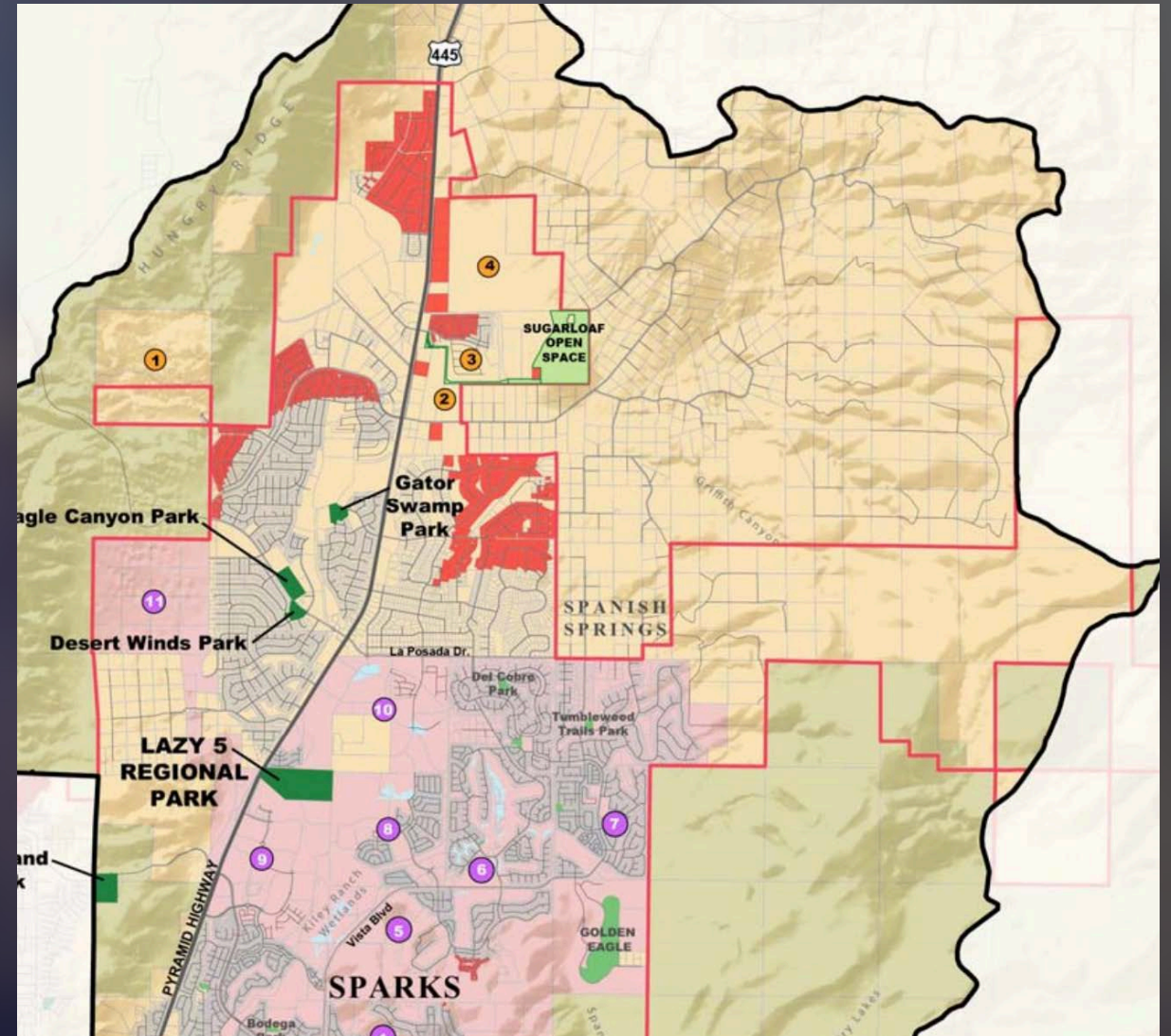
1. Pyramid
2. Truckee Canyon
3. Mount Rose





Planning Area Gaps and Priorities

- Identification of:
 - Underserved areas to prioritize new park/trail development
 - New residential developments
 - Existing parks to be built out





Plan Implementation

- Short-Term (0-5 Years)
 - Strategize acquisition/priority projects for the State Conservation Bond
 - Complete a Service Plan Study
 - Further Develop the Capital and Infrastructure Preservation Program





Plan Implementation

- Mid-Term (5-10 Years)
 - Develop facilities that generate revenue
 - Educate policy-makers about the benefits of funding recreation
 - Conduct a feasibility study for a Regional Park District
 - Reconfigure RCT Districts





Plan Implementation

- Long-Term (5-10 Years)
 - Rebalance and distribute capital expenditures
 - Foster partnerships that promote economic vitality through recreation
 - Target legislative updates supporting diverse and lasting funds for parks, trails and open space





Questions?



